

Peacefully Yours

PASTOR'S MESSAGE

Why do you look for the living among the dead? He is not here; he has risen!"
(Luke 24:5b-6a NIV)



Dear friends in Christ:

Christ is risen indeed! Alleluia! These words are words we speak throughout the Easter season as we celebrate the resurrection of Jesus from the dead. Just as Lent is a season of 40 days, the Easter season, too, lasts for a period of time: from Easter Sunday through Pentecost Sunday, 50 days in all.

The Sunday morning Gospel readings during this season focus first on Jesus' appearance to his disciples after his resurrection and then transition into Jesus' words that, through him, we can truly know the Father in heaven. We live in a world that takes offense to exclusive claims as the way of salvation, and yet, Jesus claims precisely that he is "the way, the truth, and the life. No one comes to the Father except through me" (John 14:6 ESV). How can he make such a claim? Because the whole of Scripture, both Old and New Testaments, points to Jesus. In Him, God's heavenly reign has entered into the world – the heavenly kingdom which brings forgiveness, salvation, and life to all who believe in Him.

During the Easter season, we hear of the resurrection so that we, through the power of the Holy Spirit, grow in our faith and trust that Jesus is truly the way of salvation. Indeed, we do this throughout the year! This Easter season may we fully grasp the exclusive claim that Christ has placed on us through the waters of Baptism where we "were also raised with [Christ] through faith in the powerful working of God, who raised Him from the dead" (Colossians 2:12 ESV).

In Christ,

Pastor Kevin Mann

Special Announcements:

Blessing and Godspeed

On Sunday, May 1, we will be blessing and wishing Godspeed to Rev. Ted Hoham as he prepares for deployment overseas.

On Sunday, May 15, we will be blessing and wishing Godspeed to Jordan DeBoer as he prepares to leave for his vicarage assignment.

Please join us to bless and pray for both of these men as they continue the work which God has prepared for them to do.





Peace Evangelical Lutheran Church

*Rev. Kevin Mann,
744-3869*

*Pastor.kmann@
Peacelutheranfw.org*

*Rose Murphy, Café & Youth
Ministry, 744-3869
cafeministry@
Peacelutheranfw.org*

*Jordan DeBoer (2nd yr),
Seminary Fieldworker*

*Brock Meyer (1st yr),
Seminary Fieldworker*

*Barb Bradtmueller,
Preschool Director,
456-6605
bbradt45@msn.com*

*Sheila Nehrenz, Principal,
Lutheran South Unity School
744-0459
snehrenz@lsusfw.org*

Krista Koch, Organist

Gary Gerke, Music Director

*Kasey Hapner,
Accompanist and Pianist*

*Heather Sovine,
Church Secretary
744-3869
secretary@
Peacelutheranfw.org*

PRESIDENT'S MESSAGE

By Mike Nowling, President

Members of Peace,

In April, the Peace Board of Directors sent a letter to inform all members of the congregation about the following items:

Financial Pledges

Time and Talent Surveys

Cash flow report and our financial challenges

Input request on what we need to do in the future.

In recent weeks, Peace has been blessed with several generous gifts from members that have helped us meet many of our financial obligations. We are very grateful for the generosity that has occurred. Several members have expressed ideas about improving fundraising and maintaining our present ministries. We are thankful for member input and contributions. In addition, we are very appreciative of the many individuals that volunteer in the various ministries at Peace. We are blessed with many faithful members.

"God's love gives in such a way that it flows from a Father's heart, the well-spring of all good. The heart of the giver makes the gift dear and precious; as among ourselves we say of even a trifling gift, "It comes from a hand we love," and look not so much at the gift as at the heart." Martin Luther

The Board of Directors is considering a program that is being offered by the LCMS to energize congregations. The program is a plan full of resources developed to help congregations equip themselves for carrying out God's mission with revitalization and strategic planning. We want to continue to offer and grow the many ministries at Peace by offering opportunities for current and new members to participate.

In addition, a stewardship committee is continuing to meet to discuss and plan ways to improve communication to members from our existing ministries. We are also discussing follow up plans from our recent stewardship campaign and our Time and Talent survey. If you have any ideas or suggestions, please contact any of the following church leaders: Mike Nowling, Jerry Branstrator, Dick Rutkowski, Bob Michael, Mike Gastineau, Chuck Miller, or Pastor Mann.

Note: The 2022 Annual Meeting will on Sunday, June 17, following the worship service.

A NOTE FROM OUR TRUSTEES

By Chuck Miller, Head Trustee

Dear Fellow Members in Christ,

The Trustees continue to serve the everyday needs of our Family. Our task is to maintain our facility and protect our members, students, employees, guests and visitors.

Our Church Home is a large facility. We thank everyone that contributes to the Warm & Dry Campaign. It's not our goal to just fix and repair broken things but to evaluate what and why we need them. This was the principal reason we replaced our worn out steam heat system and replaced it with a modern hot water circulating system in

(Continued on page 10)

SHARING PEACE CAFÉ

By Rose Murphy, Café Ministry

Cards in the Café: Join us on the 2nd & 4th Mondays every month from 1-3pm as we play a few rounds of Euchre! Come early if you want to purchase a beverage from the café before it closes. Bring a snack to share if you like and enjoy some great conversation with some pretty neat people! Invite your friends!

Sharing Peace Art Gallery:

The Art Gallery display in May features beautiful paintings by local artist Sandy Ladd. All pieces are available for purchases. Cash and checks only, please. Checks should be made payable to artist.

The Café Gallery has openings to display works from artists in our local area. If you or someone you know is interested, please contact Rose Murphy at cafeministry@peacelutheranfw.org or 260-744-3869.



ATTENTION GRADUATES!

Graduates: If you or your son/daughter from Peace will be graduating from high school or college this year, please contact the church office at 744-3869 or secretary@peacelutheranfw.org so that we can recognize them in an upcoming service in June. Include...

High School: Name, school graduating from, college they will attend or other future plans.

College: Name, school graduating from, degree, plans after college.



EASTER EGG HUNTER REPORT

THANK YOU to all of the volunteers who made the Easter Egg Hunt a huge success! There were 18 adults & youth who came to help stuff and sort plastic eggs, organize gift bags, decorate & enjoy lunch together the day before the event, and about 20 volunteers who served in various capacities the day of the Easter Egg Hunt!



Approximately 75 adults and children were in attendance at the Easter Egg Hunt. The harvest was plentiful and the workers were many! It was so amazing to see God's light shine so bright and beautifully in this place!



Photos by Yoong Wen



PARISH HEALTH and WELLNESS

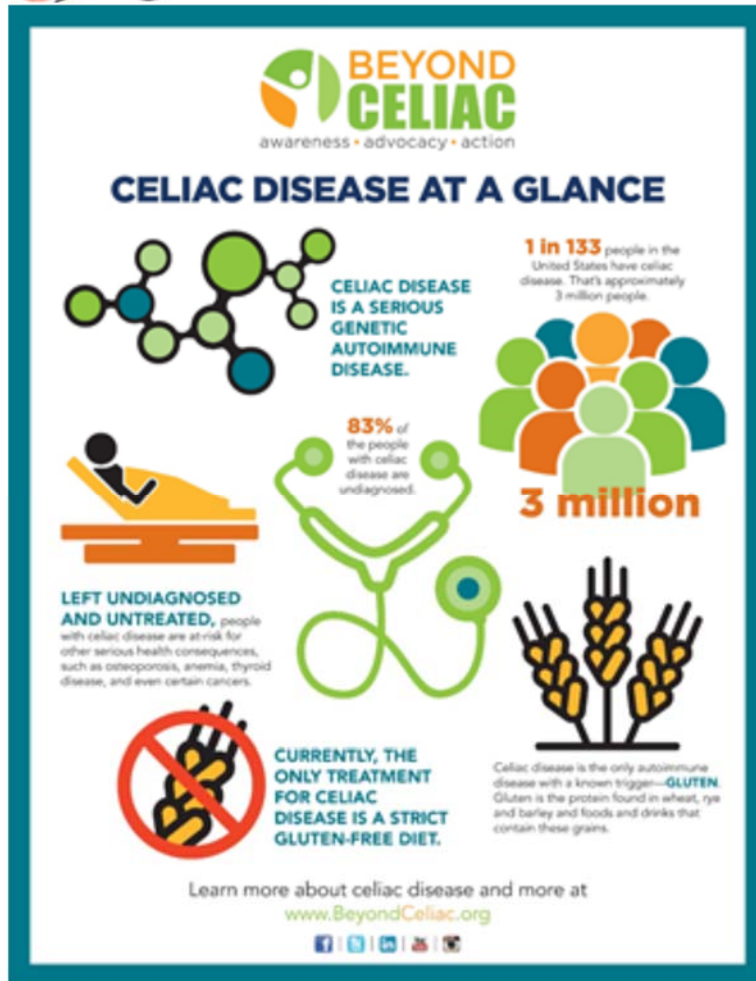
By Cheryl Erickson, RN, FNP-BC

May is Celiac Awareness Month

When people with celiac disease eat gluten (a protein found in wheat, rye and barley), their body mounts an immune response that attacks the small intestine. These attacks lead to damage on the villi, small fingerlike projections that line the small intestine, that promote nutrient absorption. When the villi get damaged, nutrients cannot be absorbed properly into the body.

You may know people who have gluten sensitivity. Research estimates that 18 million Americans have gluten sensitivity. That's 6 times the amount of Americans who have celiac disease. People with gluten sensitivity ('gluten intolerance') would not test positive for celiac disease based on blood testing, nor do they have the same type of intestinal damage found in individuals with celiac disease. 12 Common Symptoms of Non-Celiac Gluten Sensitivity:

- Bloating, gas or abdominal pain
- Diarrhea or constipation
- Nausea
- Headache
- Brain fog
- Joint pain
- Neuropathy
- Fatigue
- Abdominal Pain
- Skin Problems
- Depression
- Anemia



Exercise classes are held in the Wellness room below the stairs. Enter via doorway #3 off the parking lot.

- Chair Yoga: Monday, Friday 11:00am- 12pm
(Note: Wed. classes have been discontinued.)
- Yoga: Tuesday 6:00 - 7:00 pm.
Bring a yoga mat if you have one otherwise we have mats available for your use.
- CardioTone: Monday 5-5:45pm & Thursday 6:00 - 6:45 pm.
- Zumba: Friday 9-9:45 am
No previous experience necessary. Everyone is Welcome to participate for fun, fitness, and fellowship. \$5 per class session.

OFFICE HOURS

10-11:30 am

Friday - May 6

Fridays—June 10 and 24

For immediate assistance with health-related questions, call Cheryl at 260-341-8215

Parish Nurse Email is

Parishnurse@peacelutheranfw.org

BLOOD PRESSURE SCREENINGS

Second Wednesday & Third Sunday each month before and after Church



"Nevertheless, I will bring health and healing to it; I will heal my people and will let them enjoy abundant peace and security."

Jeremiah 33:6

PEACE LUTHERAN PRESCHOOL

By Barbara Bradtmueller, Preschool Director

The preschool year is winding down. We are looking forward to our end of the year service which is scheduled for Wednesday, May 25 at 6:30 pm. We encourage all Prayer Angels to attend to meet the preschool children and their parents for refreshments after the service. A special 'Thank you' to all of you who have made the children feel so special!

The preschool is also accepting registrations for the 2022-2023 school year which will start in September right after Labor Day. Don't wait too long! The classes are filling up quickly. Forms are available in the church office, the café, and in the hallway by the preschool rooms. Contact Barb Bradtmueller if you have any questions at (260)456-6605.



Mission Statement

Peace Lutheran Preschool exists to reach out with the Gospel and love of Jesus to young children and families in our congregation and community by providing excellence in early childhood education.

YOUTH and YOUNG ADULTS

By Rose Murphy, Youth Ministry

National LCMS Youth Gathering

2022: The National Youth Gathering (NYG) will take place this summer, July 9-13 in Houston, Texas. Jacob Mann will attend the conference, while Hannah Koch will serve as a Young Adult Volunteer (YAV). Please hold these young people up in your prayers as they prepare their hearts and minds for this life-changing Gathering.



upcoming Youth Retreats and future Gatherings and Mission Trips.

A Thank-You Continental Breakfast and NYG Update from Jacob and Hannah will take place on Sunday, July 24 after church. They will share their experiences, pictures and take-aways from the Gathering. Watch for a sign-up form in the narthex in July.

The Gathering theme is "In All Things," based on Colossians 1:15-20. "In All Things" is a reminder that the Christian story encompasses all things. Nothing, and no one, is left out. In baptism, all things in our lives are brought under the gracious rule and reign of Jesus Christ. The story includes all of each of us. Christ is the single "big idea" in Paul's letter to the Colossians, and he will be the single big idea at the 2022 LCMS Youth Gathering.

NYG Envelope Fundraiser: Many thanks to all who have donated toward the Envelope Fundraiser to support Jacob and Hannah as they prepare for the National Youth Gathering this summer. Although the fundraiser has ended, we are still accepting donations for the trip as well as

Youth Group

Youth meet up on Tuesday evenings from 6-8pm (no youth group on 2nd Tuesdays of month). We spend time in God's word, share highs and lows, plan activities & get some game time in! The schedule is as follows:

Sr. High Youth ONLY: 1st & 4th Tuesdays
Sr. & Jr. High Youth: 3rd & 5th Tuesdays

Young Adult Ministry

Those young adults (age 18 and out of high school through age 25) meet up on Zoom once a month, usually on the 3rd Sunday at 7pm. With ever changing schedules we need to be flexible. If you are a young adult and would like to get connected with this group, contact Rose at 260-402-1679 or youth@peacelutheranfw.org.



ATTENTION YOUTH!!

Youth entering 6th-8th grades in the fall are welcome to join youth group for many of our summer activities. Mark your calendars!

Youth entering high school in the fall are invited to Cross Talk on Tuesdays from 6-8pm

High School Gradates Ask Rose how to connect on Zoom with Young Adult Ministry on 3rd Sundays each month at 6:30pm. Schedule may vary.

SMALL GROUP BIBLE STUDY

By Dennis Wheeler, Elder

How do you respond to disasters? Many people respond to disasters by taking refuge in their faith, along with fellow believers. This is a typical reaction to the many horrible events that beset us in this world. If you could see the disaster coming and have time to react, what would you do, even if it means risking your life? In the book of Esther (Tuesday group has been studying), we learn how Esther responded, first with fear and then willing to sacrifice her life to save her people.

God has promised to work in our lives, but not as dramatically as Esther's. With the gifts and talents He gives us, we do the work of the Lord in whatever situation we find our-

selves.

Getting together in small groups to study God's words is one way of sharing the knowledge of each other and helps build a stronger relationship among the group. The Tuesday study group meets at 1:00 pm the first Tuesday of the month at Peace. We would like to have you join us if you're able. Prior to meeting, you will be able to take advantage of the Sharing Peace Café. The once-a-month Friday group meets at different residences in the evening. If you would like more information on joining a group or starting a new group then call the church office at 774-3869.

NURSE APPRECIATION

May 6 is National Nurses Day and we would like to take this opportunity to thank all of the nurses in our congregation for all of their work and sacrifice throughout their careers. The last two years have been especially challenging as many have put themselves on the front line and gone beyond the call of duty during the pandemic. Even in the best of conditions, you devote many hours of caring for others. Thank you so much to those nurses at Peace who volunteer monthly to take blood pressure screenings and give us information when our BP isn't at a healthy level.

Many thanks to Cheryl Erickson who serves as the Parish Nurse at Peace. Your commitment in keeping us informed and educated on our health is a true blessing, indeed!

Our Nurses at Peace: Cheryl Erickson, Pam Lehman, Teresa Bower, Brenda Gensic, Edith Wheeler, Cathy Gastineau, Claire Gastineau, Tim Strasen, Treva Strasen, Kelsey Gatchell, Haley Blanchette, Jackie McBride, Drew Bercot.

Although we know it is Nurses Day, we also want to thank all nurses, doctors, first responders and others who work (even those retired!) in the healthcare field. We greatly appreciate your service!



THANK YOU FROM LUTHERAN SOCIAL SERVICES

Thank you so very much for your support of the Lutheran Social Services Christmas Program. We are humbled and encouraged by the overwhelming response from our church sponsors. In addition to gifts (through donated gift cards) for 102 families, your support of donated items provided an additional 34 families with toys, coats, books and games. One program parent said "If it wasn't for your blessings, I wouldn't have been able to put a smile on my children's faces." To read the entire thank you letter from LSSI, check the bulletin board in Founders' Hall.

RUMMAGE SALE



Women in God's Service (WinGS) are planning a

Fall Rummage Sale



September 30/October 1

They are accepting clean items at this time.


Please take to the Multi-Purpose Room #110 in the lower level leading to the Fellowship Hall.





Sun	Mon	Tue	Wed	Thu	Fri	Sat
1* 9:00am Worship with Communion 10:30am Celebration for Ted Hoham	2 11:00am Chair Yoga 3:30pm Board of Elders 5:00pm Cardio Tone	3 Bulletin Items Due 1:00pm Bible Study in the Café 6:00pm JH + SH Youth 6:00 pm Yoga	4* Beginning May 1, there is no 11am Chair Yoga 6:30pm Worship with Communion	5 National Day of Prayer 6:00pm Cardio Tone 7:00pm Choir Rehearsal	6 9-9:45am Zumba 10:00-11:30am Parish Nurse Is In 11:00am Chair Yoga	7
8* Mother's Day 9:00am Worship with Communion 10:30am Education Hour Mother's Day Carnation Sale	9 11:00am Chair Yoga 1:00-3:00pm Cards in the Café 5:00pm Cardio Tone	10 Bulletin Items Due No Youth Group 6:00 pm Yoga	11* Wed Chair Yoga Discontinued 6:30pm Worship with Communion BP Screenings	12 6:00pm Cardio Tone 7:00pm Choir Rehearsal	13 9-9:45am Zumba 11:00am Chair Yoga	14
15 9:00am Worship BP Screenings 10:30am Farewell for Jordan DeBoer 7:00pm YAMz	16 11:00am Chair Yoga 5:00pm Cardio Tone	17 Bulletin Items Due 6:00pm JH + SH Youth 6:00pm Yoga 6:30pm Board of Directors	18 Wed Chair Yoga discontinued 6:30pm Worship	19 6:00pm Cardio Tone	20 9-9:45am Zumba 11:00am Chair Yoga	21 Armed Forces Day 9:00 am Men at Peace
22* 9:00am Worship with Communion 10:30am Education Hour	23 11:00am Chair Yoga 1:00-3:00pm Cards in the Café 5:00pm Cardio Tone 7:00pm Board of Christian Ed	24 Bulletin Items Due 6:30pm Board of Worship 6:00pm SH Youth 6:00pm Yoga	25* Last day of Peace Preschool Wed Chair Yoga discontinued 6:30pm Worship (Preschool Closing Service)	26 Last day of school at LSUS 6:00pm Cardio Tone	27 9-9:45am Zumba 11:00am Chair Yoga	28
29 9:00am Worship CLHS Graduation	30 Memorial Day The Office and Café will be closed. 	31 Bulletin Items Due 6:00pm JH + SH Youth 6:00pm Yoga				



Sun	Mon	Tue	Wed	Thu	Fri	Sat
			1 Wed Chair Yoga discontinued 6:30pm Worship	2 6:00pm Cardio Tone	3 9-9:45am Zumba 11:00am Chair Yoga	4
5* Pentecost Sunday 9:00am Worship with Communion	6 11:00am Chair Yoga 3:30pm Board of Elders 5:00pm Cardio Tone	7 Bulletin Items Due 1:00pm Bible Study in the Café 6:00pm SH Youth 6:00 pm Yoga	8* Wed Chair Yoga discontinued 6:30pm Worship with Communion BP Screenings	9 6:00pm Cardio Tone	10 9-9:45am Zumba 10:00-11:30am Parish Nurse Is In 11:00am Chair Yoga	11
12* 9:00am Worship with Communion	13 11:00am Chair Yoga 1:00-3:00pm Cards in the Café 5:00pm Cardio Tone	14 Bulletin Items Due NO Youth Group 6:00 Yoga 6:30pm Board of Directors	15* Wed Chair Yoga discontinued 6:30pm Worship with Communion	16 6:00pm Cardio Tone	17 9-9:45am Zumba 11:00am Chair Yoga	18 9:00 am Men at Peace
19 Father's Day 9:00am Worship (Graduate Recognition) BP Screenings 10:30am Voters' Meeting 7:00pm YAMz	20 11:00am Chair Yoga 5:00pm Cardio Tone	21 Bulletin Items Due 1-4pm Youth Slip-n-Slide Kickball 6:00pm SH/ Youth 6:00pm Yoga	22 Wed Chair Yoga discontinued 6:30pm Worship	23 6:00pm Cardio Tone	24 9-9:45am Zumba 10:00-11:30am Parish Nurse is in 1:00am Chair Yoga	25
26* 9:00am Worship with Communion	27 11:00am Chair Yoga 1:00-3:00pm Cards in the Café 5:00pm Cardio Tone 7:00pm Board of Christian Ed	28 Bulletin Items Due 3:30pm Board of Worship 6:00pm SH Youth 6:00pm Yoga	29* Wed Chair Yoga discontinued 6:30pm Worship with Communion	30 6:00pm Cardio Tone		

* = Communion Service SH = Sr. High JH = Jr. High YAM = Young Adult Ministry

For the Record

MAY Birthdays

Joyce Trzynka	5/2
Carmen Seemann	5/5
Tim Klage	5/6
Ann Gater	5/7
Deb Lahrman	5/9
Dawn Mann	5/9
Sarah Larkin.....	5/10
Rachel Till	5/10
Madelyn Springer	5/12
Marshal Heingartner	5/13
Mike Gastineau	5/15
Tim Springer	5/15
Grant Acker	5/17
Ryan Michael	5/18
Margaret Doell	5/19
Lora Acker	5/21
Caelia Neaville	5/22
Jim Herber	5/23
Ken Heingartner	5/24
Caryl Spira	5/27
Krista Koch	5/29
Harry Russell	5/30
Nancy Zollinger	5/30
Claire Gastineau	5/31
Autumn Lehman	5/31

MAY Anniversaries

James and Joyce Trzynka	5/2
Nic and Sonja Stier	5/2
Andrew and Lori Beeks	5/14
Dennis and Edith Wheeler	5/15
Robbie and Jillian Gatchell-Ward	5/16
Mike and Michele Strasen.....	5/21
Ken and Peggy Heingartner.....	5/23



JUNE Birthdays

Eric Lehman	6/1
Kevin Knoch	6/2
Myrtle Dashiell	6/3
Sandy Henry	6/3
Mitchell Gastineau	6/5
Drew Hollman	6/6
Andrew Mahrt	6/6
Edith Wheeler	6/8
Gordon Springer	6/10
Tom Wolf	6/11
Kyle Hormann	6/15
Oliver Erickson	6/16
Lucille Wilson	6/18
Thomas Hoham	6/19
Ruth Ann Schimmel	6/20
Lindsey Floyd	6/21
Remy Laisure	6/24
Kara Sells	6/24
Seth Walhart	6/24
Dan Bercot	6/29

JUNE Anniversaries

Bob & Mary Brown	6/1
Tim & Heather Klage	6/1
Travis & Haley Blanchette	6/2
Mike and Valerie Nowling	6/4
Marty & Michele Blessing	6/5
Tom & Lisa Marie Wolf	6/5
Andrew & Ashley Heingartner	6/11
Gary & Sheila Gerke	6/12
Nicholas & Sarah Myers.....	6/14
Tom & Sheila Nehrenz.....	6/16
Ron & Terry Gehring	6/18
Mart & Cheryl Erickson	6/19
Jim & Nancy Herber	6/24
Jerry & Lois Branstrator	6/27
Gene & Krista Koch	6/27



For the Record

(Continued from page 2)

Founders Hall. We save every month with a reduced water bill and lower natural gas fees. We repaired our Sanctuary roof on the east side two years ago and this summer we need to take a **SERIOUS** look at the remaining west side of the Sanctuary roof. This will be another large expense.

Please, continue to support the Warm and Dry campaign. If you can increase your amount by an extra \$5.00, \$10.00 or more, please consider helping your Trustees by adding to your current contribution through your monthly Warm and Dry envelope. You could also consider making a one-time contribution.

Respectfully,

Chuck Miller
Eric Lehman
Ron Dassler
Ken White



Altar flower donations are still needed for some Sundays in July, September, October and December. See the Flower Chart on the bulletin board across from the office. Cost is \$30.

Soul Accounting

Deaths

Judy Stoppenhagen
3/11/2022

Released

Kendra Soliday
(April 2022)



Baptism

Noelle Laine Whitt-Harris

Daughter of

Kelsey Gatchell and
Richard Whitt-Harris

Granddaughter of
Stacey and Nick Jackson
03/06/22

Kroger Earnings

Kroger encourages our members to link their rewards card to Peace. "Community Rewards" is easy to use and the more we shop with Kroger, the more money we will earn!

**Our earnings from
1/1/22—3/31/22 were \$51.80**

Have Good News to Share?

Email your news to:
Newsletter@peacelutheranfw.org
by the 10th of the month

Giving & Attendance

February 27, 2022 through April 17, 2022
contributions and attendance:

Feb 27/Mar 2	\$3,253.00	80/78
Mar 6/9	\$5,881.60	91/57
Mar 13/16	\$13,952.00	74/68
Mar 20/23	\$5,479.00	109/56
Mar 27/30	\$16,901.50	71/66
Apr 3/6	\$6,390.00	68/45
Apr 10/14/15	\$5,048.00	101/70/83
Apr 17	\$16,494.06	199

Budget

Yearly 2021-2022: \$ 333,897.96
Weekly 2021-2022: \$ 6,421.11

THANK YOU to those who donated lilies
to beautify our Sanctuary at Easter

John & Karen Bercot
Jerry & Lois Branstrator
Amy Bredemeyer
Margaret Doell
Mart & Cheryl Erickson
Jim & Nancy Herber
Ted & Lizzy Hoham
Todd and Kristi Hollman
Nick and Stacey Jackson
Elaine King
Linda Mahrt
Bob & Chris Michael
Mike & Rose Murphy
Dick & Becky Rutkowski
James & Joyce Trzynka
Ken & Ann White



Directory Changes

Please contact the church
office with any changes of
address, phone numbers
and email addresses

CONCORDIA LUTHERAN HIGH SCHOOL

1st ANNUAL
CONCORDIA LUTHERAN HIGH SCHOOL
Pickleball Tournament/Fundraiser!!

Saturday, May 7, 2022

CLHS GYM

1601 St. Joe River Dr.

*for details and registration form contact:
Dan Heath at ptheath1955@yahoo.com*

Tournament registration fee: \$50.00 per person
(single fee includes T-shirt, gender & mixed play entries)
All fees benefit Concordia Lutheran High School

Round Robin by three skill levels:

Beginner (2.0 or less), Intermediate (2.5-3.0), Advanced (3.5-4.0)

Men's Doubles (9:00 - Noon)

Women's Doubles (9:00 - Noon)

Mixed Doubles (1:00 pm - 5:00 pm)

(Forms are also available on the bulletin board in Founders' Hall)

* * * * *

Lenten Suppers: Ministry Donations

By Caryl Spira

Thank you to everyone who participated in this year's Lenten suppers. The menus for the five suppers were created around the entrées, side dishes, and desserts provided by 16 different members. What a group effort! An average of 50 people attended supper weekly, enjoying good food and fellowship.

Thanks to the generosity of the cooks who volunteered and donated their food, the overall expenses were kept low. This allowed the remaining \$569 in free-will offerings to be donated. \$140 was raised for the Horn family for expenses as their daughter Hailey (LSUS 2nd grader) continues her medical recovery. A thank-you note from the family is on the bulletin board outside the church office. In addition, \$128 was donated to Peace Pre-School and the Sharing Peace Café Ministry received \$301. What a blessing!

LUTHERAN SOUTH UNITY SCHOOL

Retirement Open House

June 5th, 1-3 PM at Mt. Calvary

Retirement Open House for **Gene Koch**, Barry Chrzan, Cathie Wakeland, and **Sheila Nehrenz**



LSUS has opened up enrollment to the community. If you know of anyone who is looking for a new school for their child or children, please have them call the office (744-0459) and contact Barb Johnson. We will be happy to let you visit our school so that you can see all of the benefits that our school has to offer.

The school strives to fill our classrooms with children and families who desire a high-quality Christ-centered education. Our desire is to equip and empower the children to become leaders and believers in our churches and community. We also want the children to make their own path and not follow others. Also, we want students who are willing to serve others with grateful hearts.

We have financial aid and scholarships available. Also accepted are School Choice vouchers.

LSUS would like to share this opportunity with you of all the blessings we have to offer your child. We also seek to share our faith with all who enter our building. Please stop by and visit with us. See our classrooms and programs that are available at our school.



Mother's Day Carnation Project



Each year Right to Life of Northeast Indiana partners with area churches to bring in beautiful flowers in honor of moms, grandmothers, and mother-figures in their congregation. This project is a celebration of this important role, as well as, support of the life-saving work of Right to Life. An assortment of carnations will be available for purchase in the narthex on Mother's Day. Brighten the day of a special person in your life by purchasing them some flowers.



4900 Fairfield Ave.
Fort Wayne, IN 46807

Phone: 260-744-3869
www.PeaceLutheranFW.org

Return Service Requested

Mission

Peace Evangelical Lutheran Church exists to reach the lost and to provide for spiritual growth and nurture of our family of believers through education and ministry of Word and Sacraments.
